

# WELCOME BACK, CLASS!

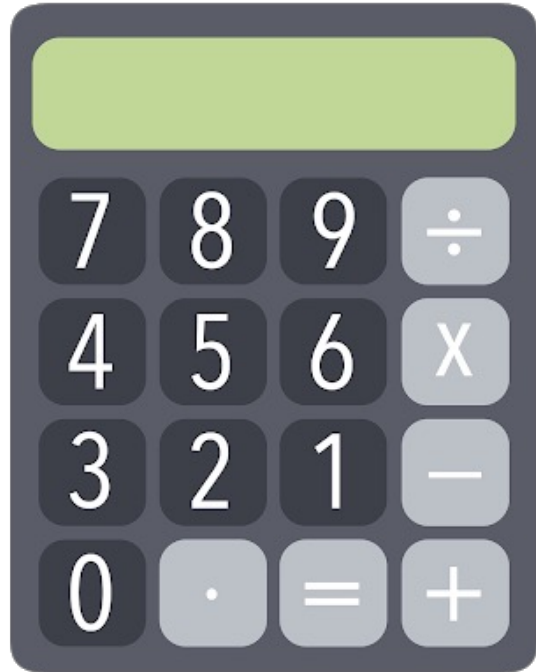
Project #4 Intro  
2/23/22

# WARM-UP EXERCISE 😊

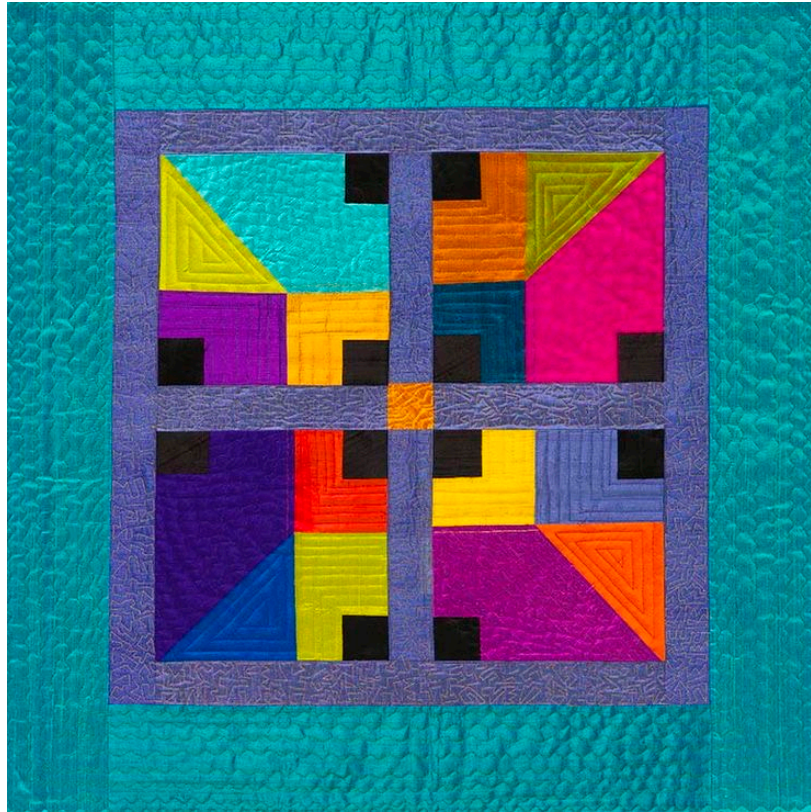
If you had the power to change what fell out of the sky when it rained, what objects, creatures, or food would you pick?



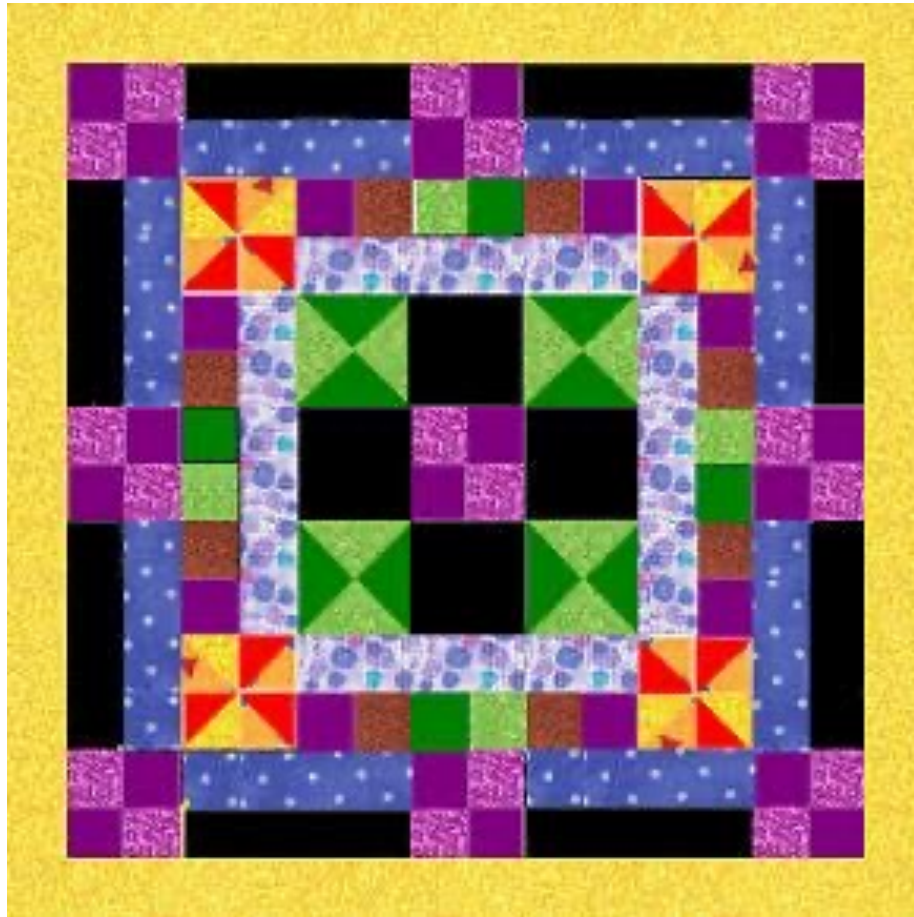
# CONNECTING ART & MATH 😊



# LESSON BACKGROUND — PATCHWORK ART ☺



# PROJECT EXAMPLE — "FRACTION FABRIC"



# LESSON VOCAB 😊

- **Proper Fractions:** When the numerator is less than the denominator.
- **Improper Fractions:** When the numerator is greater than or equal to the denominator.
- **Equivalent Fractions:** Fractions that represent the same number.
- **Mixed Fractions:** Whole number and a fraction.
- **Part:** A piece of an entire whole fraction or object.
- **Patchwork:** Stitching various fabric pieces together to create a big piece of fabric.
- **Templates:** Made of either plastic or metal, these help patchwork artists draw certain shapes before cutting the fabric.
- **Sleeve:** A strap that's added to the back of the quilt to help hang it on a wall.
- **Quilter's Rule:** A clear numbered ruler to help create gridlines and measurements while still being able to see the fabric beneath.
- **Quilt Sandwich:** The 3 layers that make up a quilt – the top, batting, and backing.



# WHO BROUGHT PATCHWORK TO AMERICA?

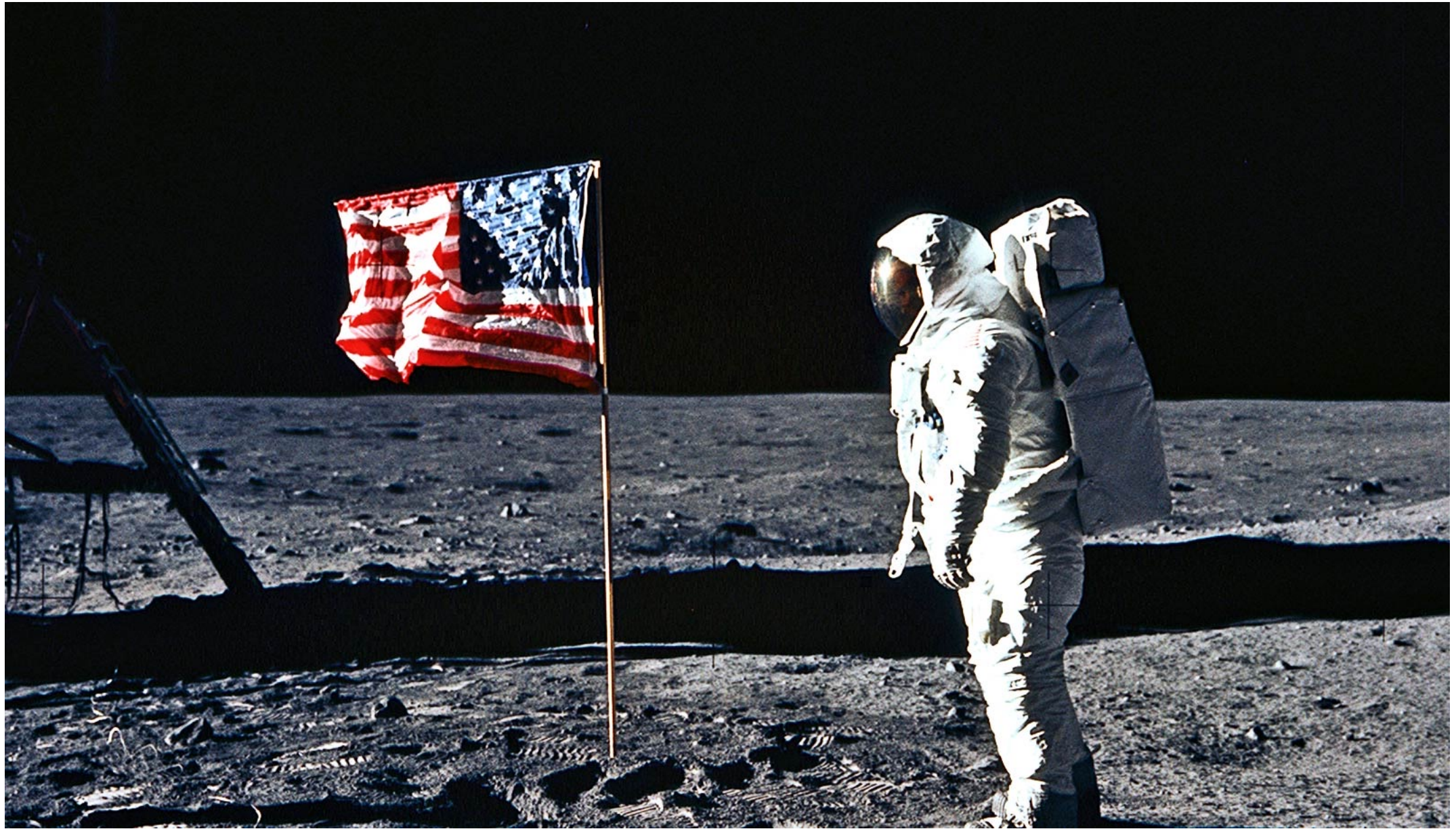
- The Dutch and English settlers between 1650-1850, but the oldest tapestries can be traced back to ancient Egypt!
- Patchwork can be seen in flags, uniforms, art, clothing, blankets (that represent special life moments and other designs), and even in maps!



# PATCHWORK ART AROUND THE WORLD — USA, BETSY ROSS, & THE MOON



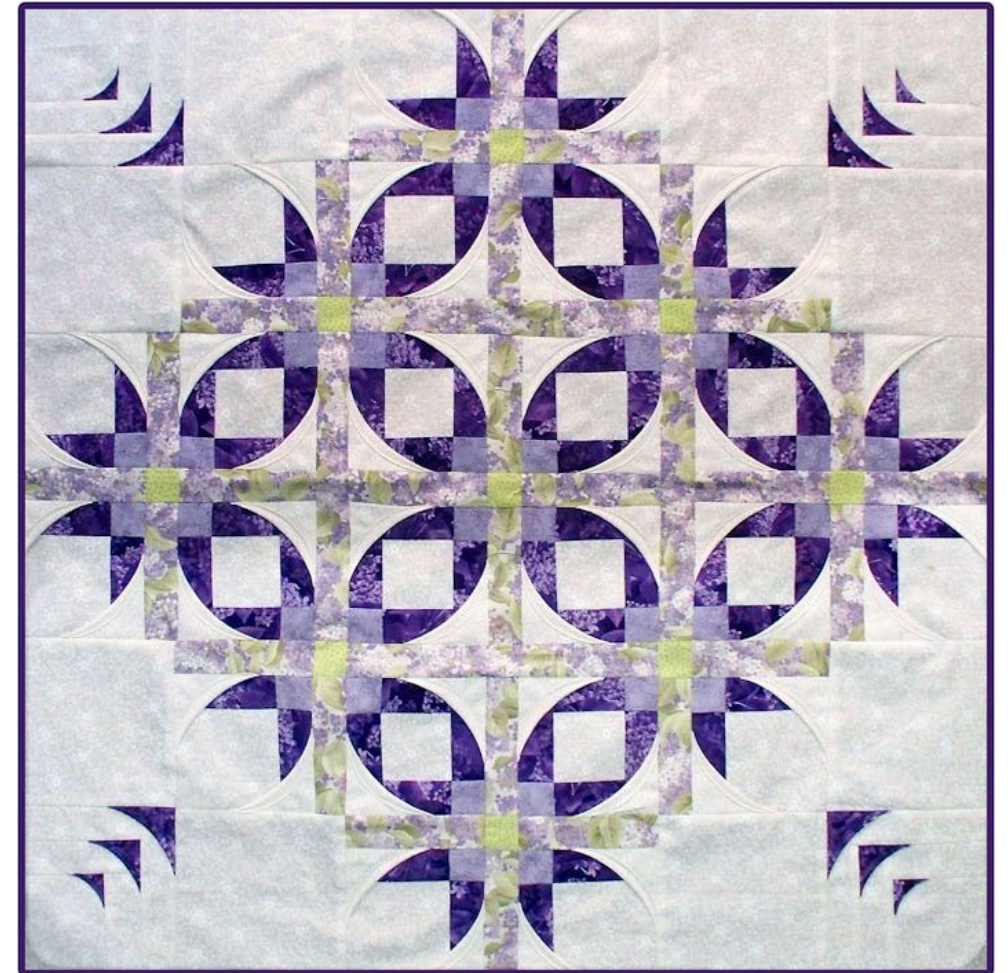




# PATCHWORK ART AROUND THE WORLD — ITALIAN FRIENDSHIP QUILT

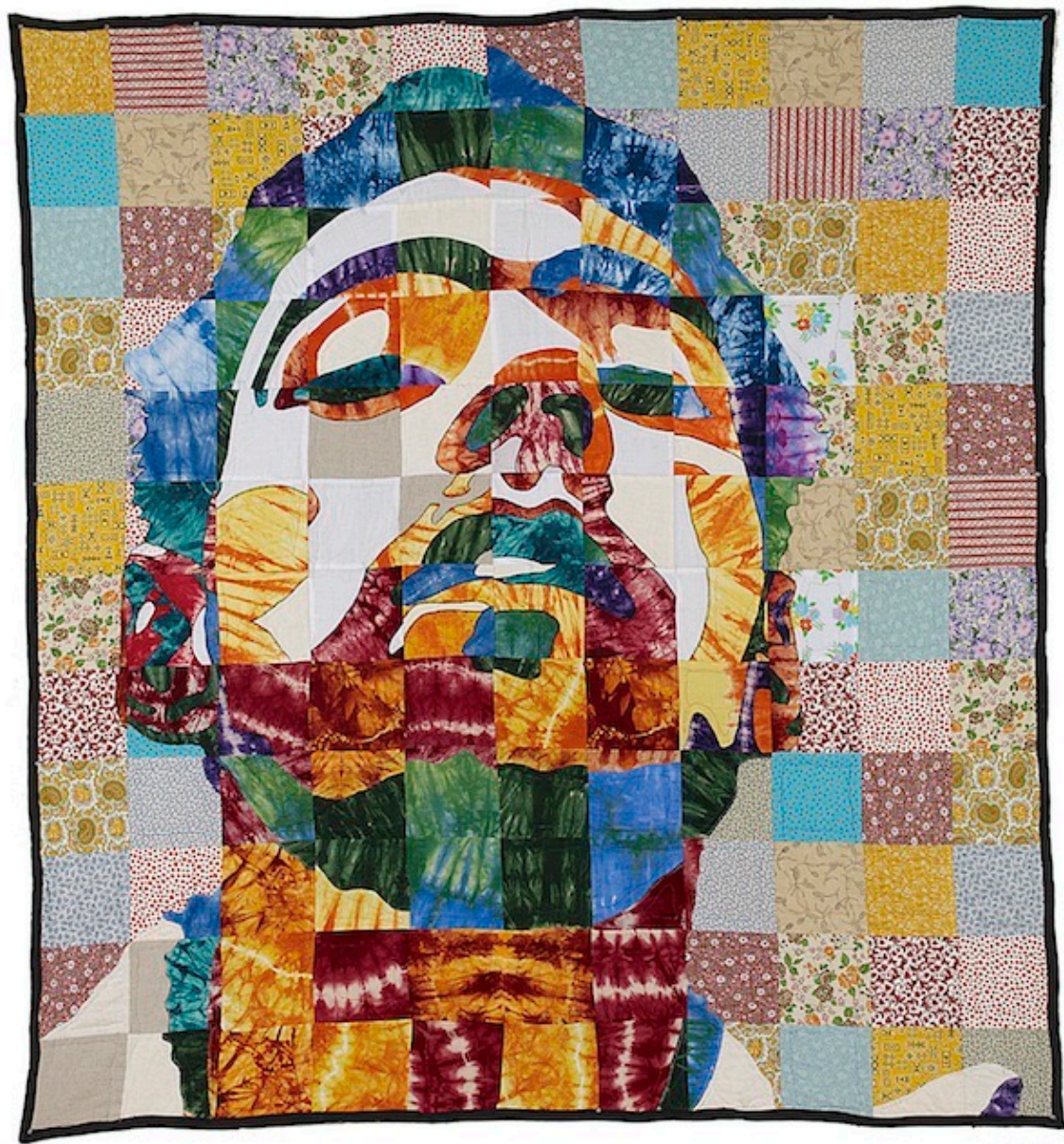


# PATCHWORK ART AROUND THE WORLD — MEXICAN STAR DANCE QUILTS



# ARTIST — LUKE HAYNES (FABRIC & MIXED MEDIA)





# ARTIST — ANN HARWELL (FABRIC & JEWELS)

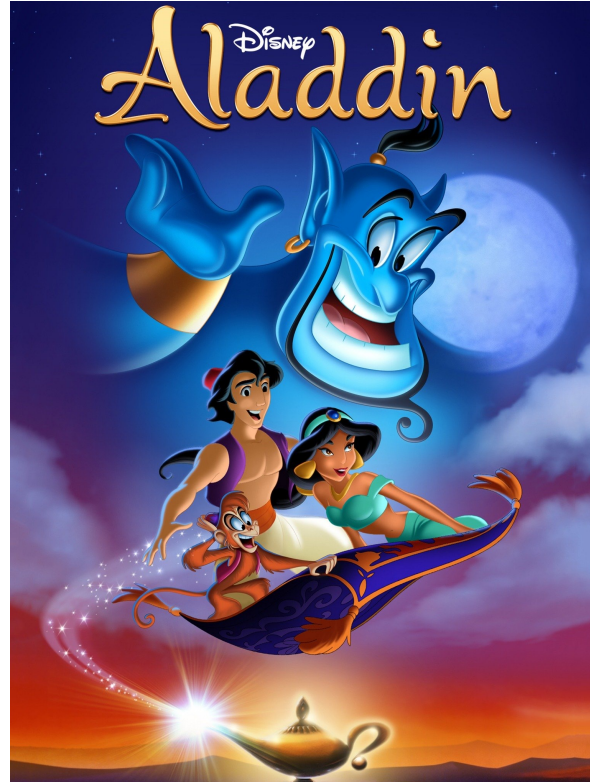






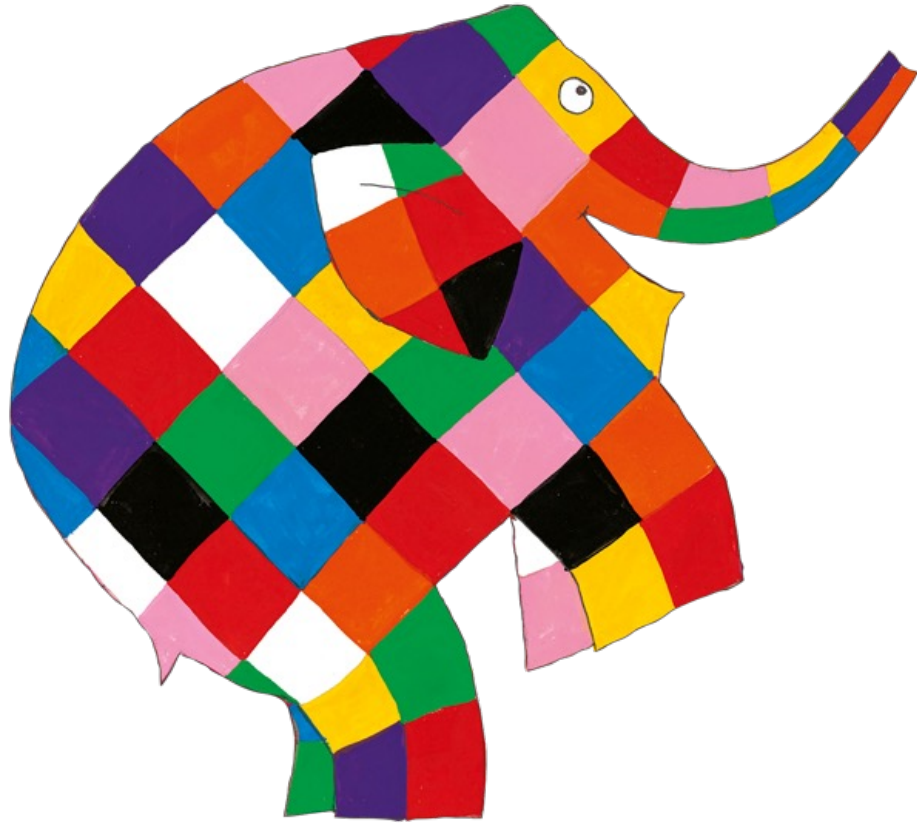


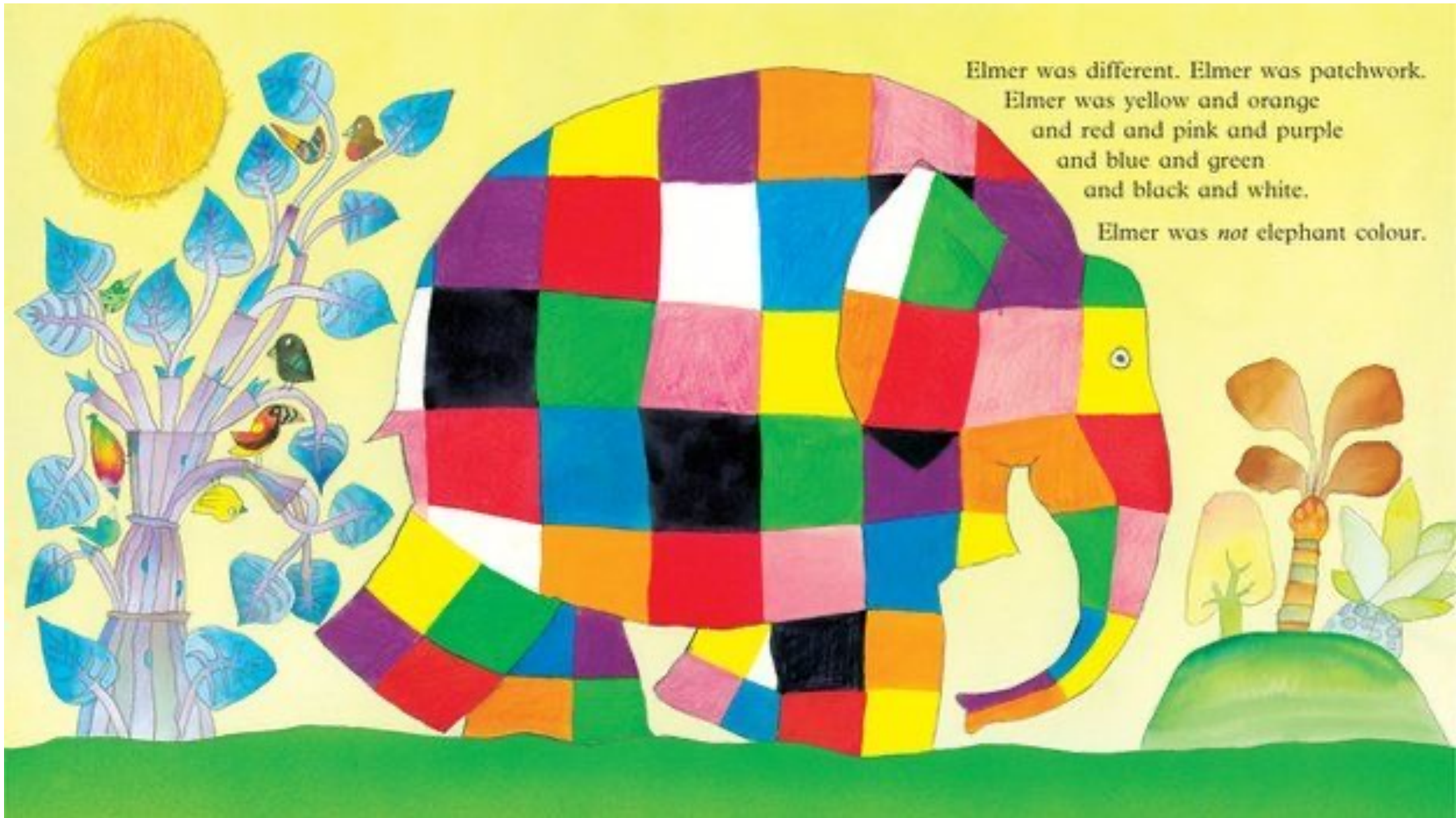
# POP CULTURE — “ALADDIN” (1992)



<https://www.youtube.com/watch?v=BCgcQXOXYfk>

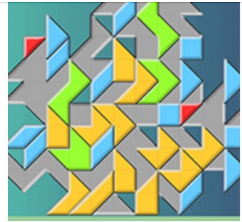
# POP CULTURE — “ELMER THE PATCHWORK ELEPHANT” BY DAVID MCKEE (2007)





Elmer was different. Elmer was patchwork.  
Elmer was yellow and orange  
and red and pink and purple  
and blue and green  
and black and white.  
Elmer was *not* elephant colour.

# EXTENSION ACTIVITY 😊



Shape Inlay



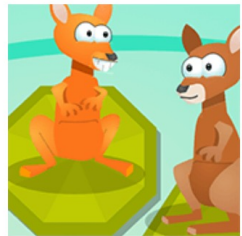
Tangram Puzzles



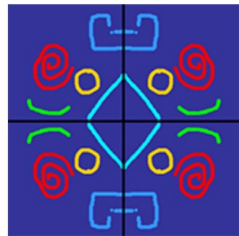
Code Builder



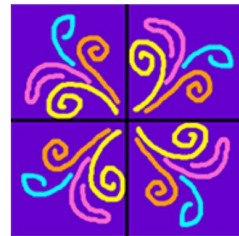
Follow the Code



Kangaroo Hop



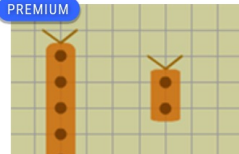
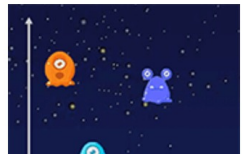
Reflection Painter



Rotation Painter



Building Blocks



[https://www.mathplayground.com/index\\_geometry.html](https://www.mathplayground.com/index_geometry.html)

# CLOSURE 😊

- What did we accomplish with our project?
- What did we learn about patchwork art and fractions?
- How did we connect art and math today?



SEE YOU ALL NEXT TIME! 😊

