

PAPER SCULPTURES

OBJECTIVES

OF THIS LESSON

OBJECTIVES

- Learn about Frank Lloyd Wright and architecture
- Create a paper sculpture project

MATERIALS

MATERIALS

- Pencil
- Paper
- Ruler
- Scissors
- Glue

VOCABULARY

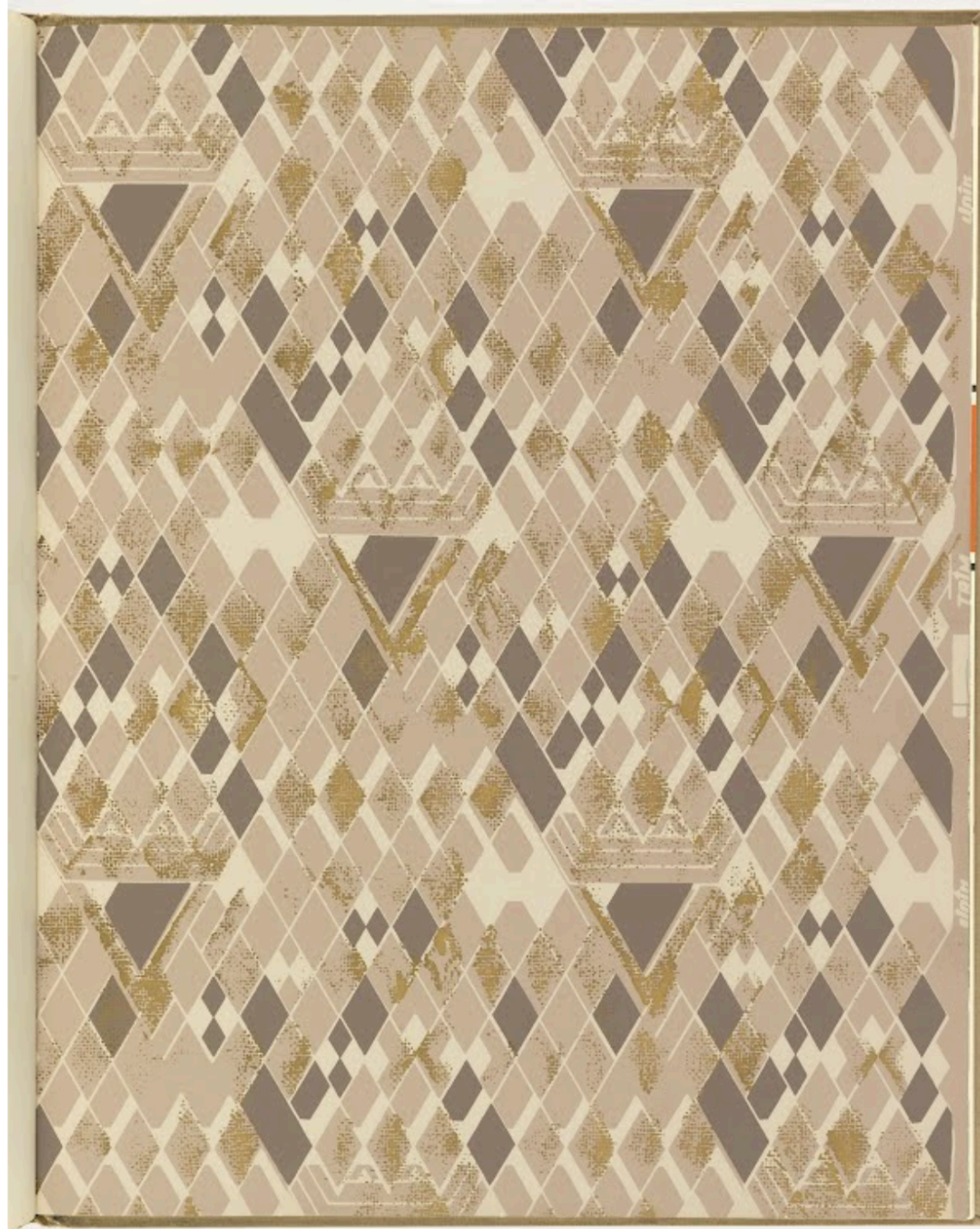
- Geometric Shape- Mathematical shapes. Perfect and regular
- Organic Shape- Shapes like ones we can find in nature. Imperfect
- Polygons- a plane figure with at least three straight sides and angles
- Quadrilateral- a four-sided figure (squares, rectangles, parallelograms)
- Area- the total space taken up by a flat surface or shape of an object
- Perimeter- the distance around the edge of the shape

ABOUT FRANK LLOYD WRIGHT AND ARCHITECTURE

- Creating structures is a process that is thousands of years old
 - the oldest buildings are 5,622 years old!
- Frank Lloyd Wright
 - Architect
 - Lived from 1867-1959
 - Known for his buildings but designed many other works of art, stained glass, rugs, and furniture

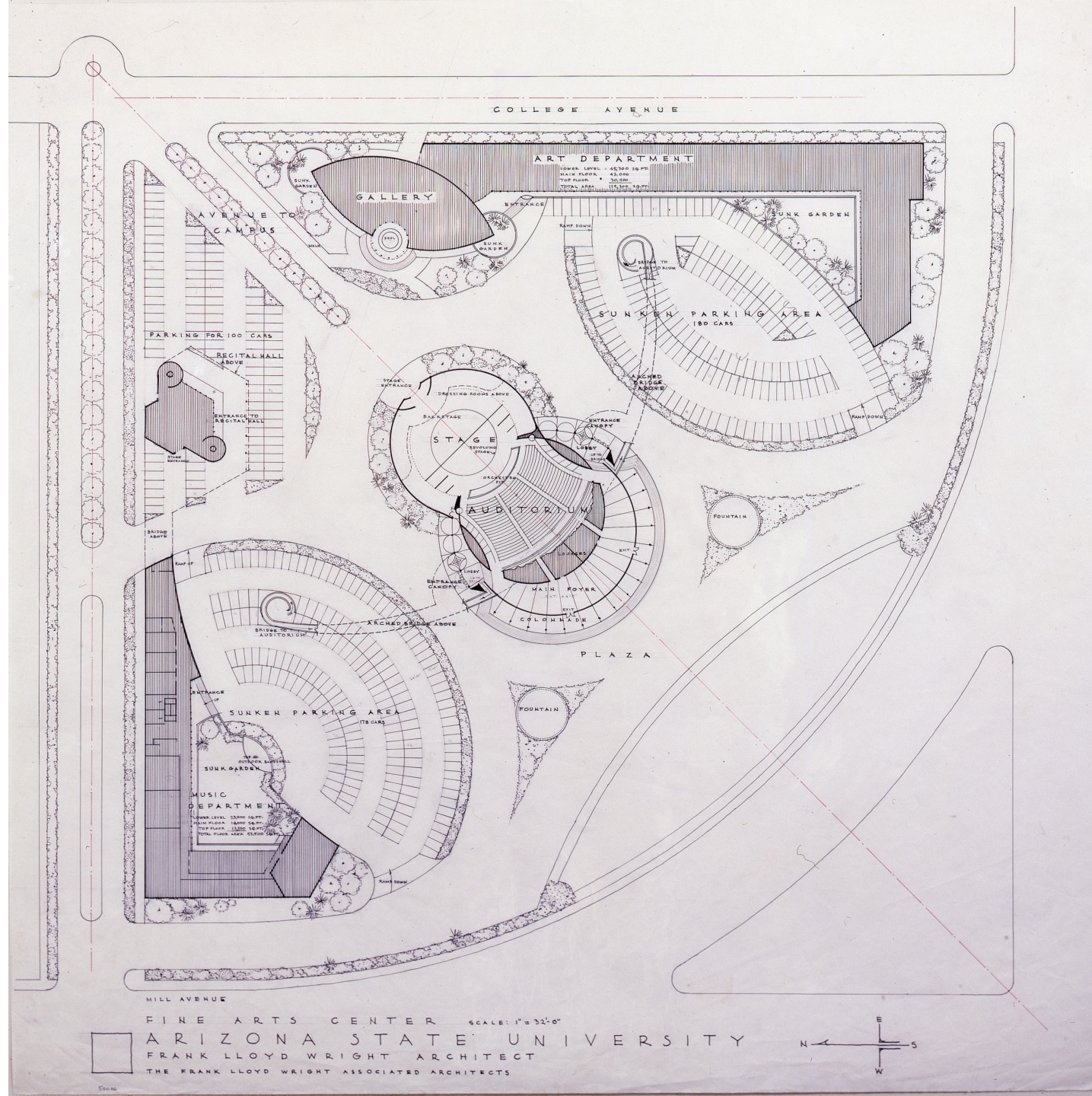




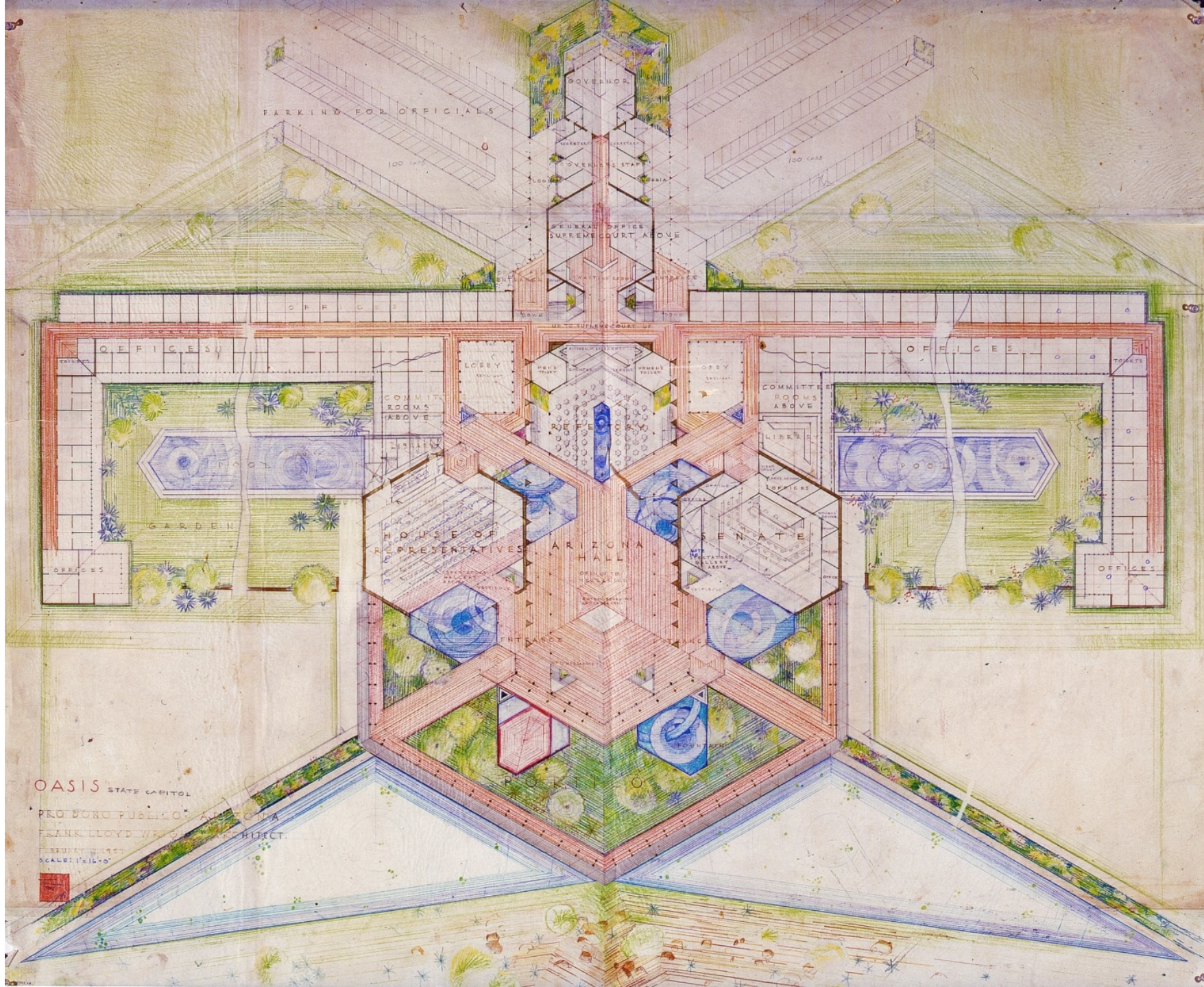




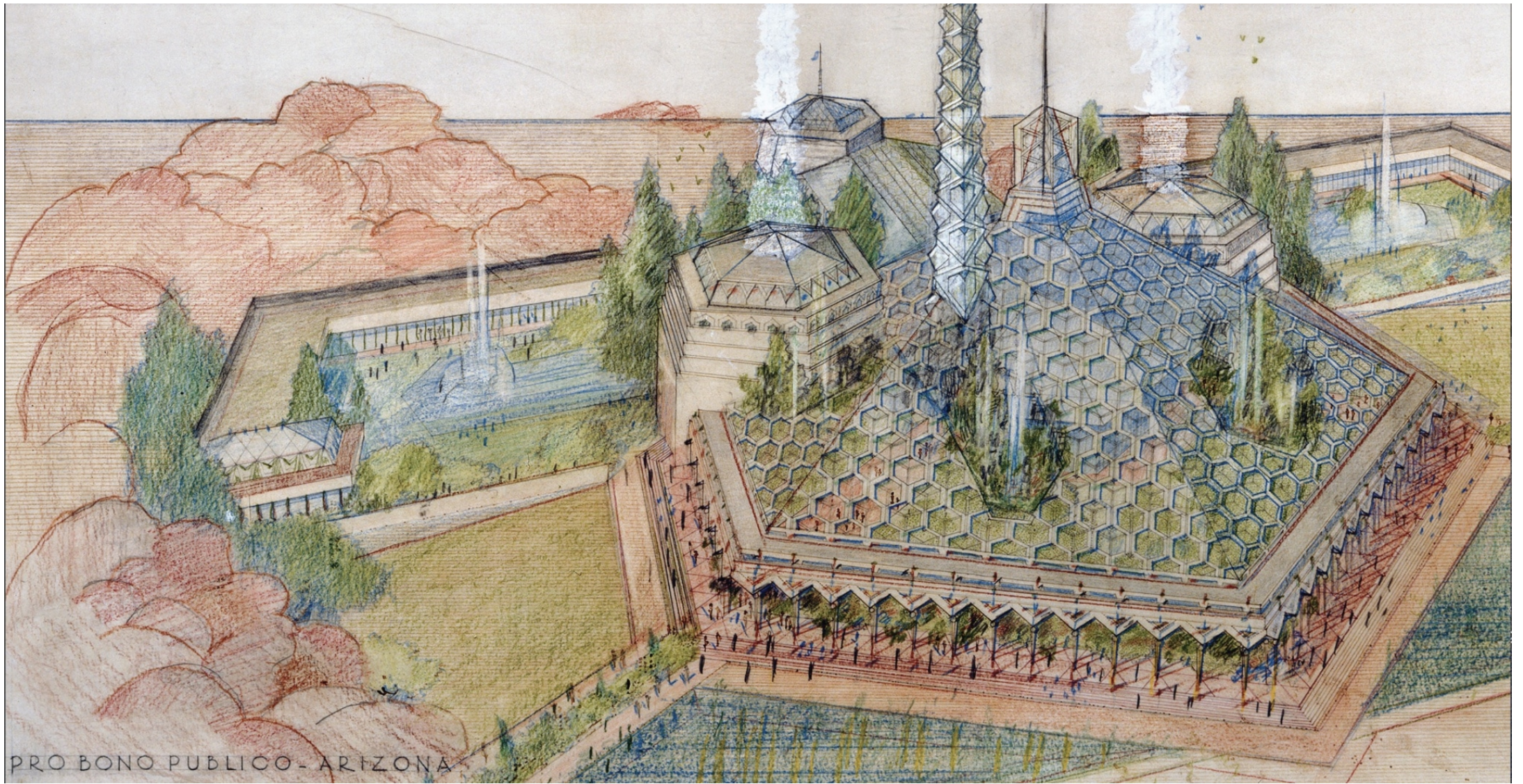
What
geometric
shapes can
you see in
this?







OASIS STATE CAPITOL
PRO BONO PUBLICO ARIZONA
FRANK LLOYD WRIGHT ARCHITECT.
DESIGNED 1951
SCALE: 1/16" = 1'-0"



INSTRUCTIONS

INSTRUCTIONS

- First we have to make a 1x1 grid
 - Artists like Frank Lloyd Wright practice all of their designs on paper before they build anything in 3D like a rough draft when writing an essay
- Then, start creating within the grid
 - *You can use the grid to help you create different geometric shapes.*
 - *You can color in different sections of the grid.*
 - *You can use the grid to draw patterns.*
- Next, we will learn different basic techniques and make some simple shapes:
 - Fold
 - Roll
- Now, we will learn different ways of joining those shapes to our paper or other shapes
 - Feet
 - Cross joining

INSTRUCTIONS

- Now we can create our sculpture
- Start with any shapes that will make up the base of your project
- Decide how tall the shapes will be. That's how wide you will make your strip of paper.
- Measure out how many squares across they are. That will help you figure out how long your folds or rolls should be.
- Once you make a shape and place it, move your sculpture around to see what it looks like from all the different sides. THEN, glue it down once you are happy with it.

REFERENCES

- <https://artsandculture.google.com/asset/taliesin-line-of-decorative-wallpapers-frank-lloyd-wright/-wGznJaE8LKAGg?hl=en>
- <https://franklloydwright.org>
- <https://www.archdaily.com/270097/frank-lloyd-wright-archives-relocates-to-new-york>