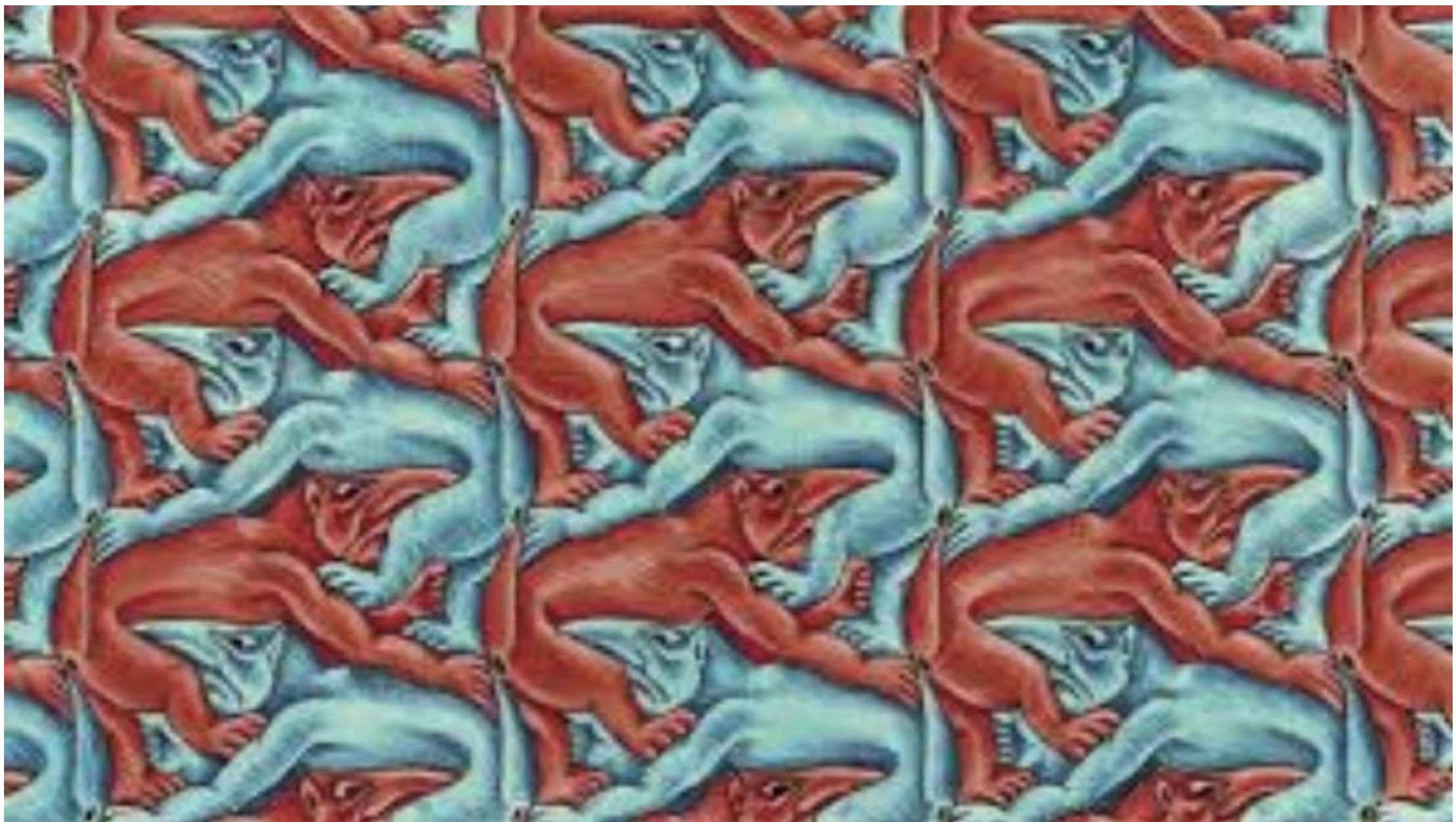




ARTS LINK



Who is M.C. Escher?



What Is A tessellation?



1944-1945, 1946, 1947

Pablo Picasso



Maurtis Cornelis Escher was an artist from the Netherlands who lived from 1898-1972

He was known for his works of repeating patterns.

He had a healthy obsession with the “regular division of the plane”.

Shapes represented by animals or birds are tiles across a flat plane in such a way that the



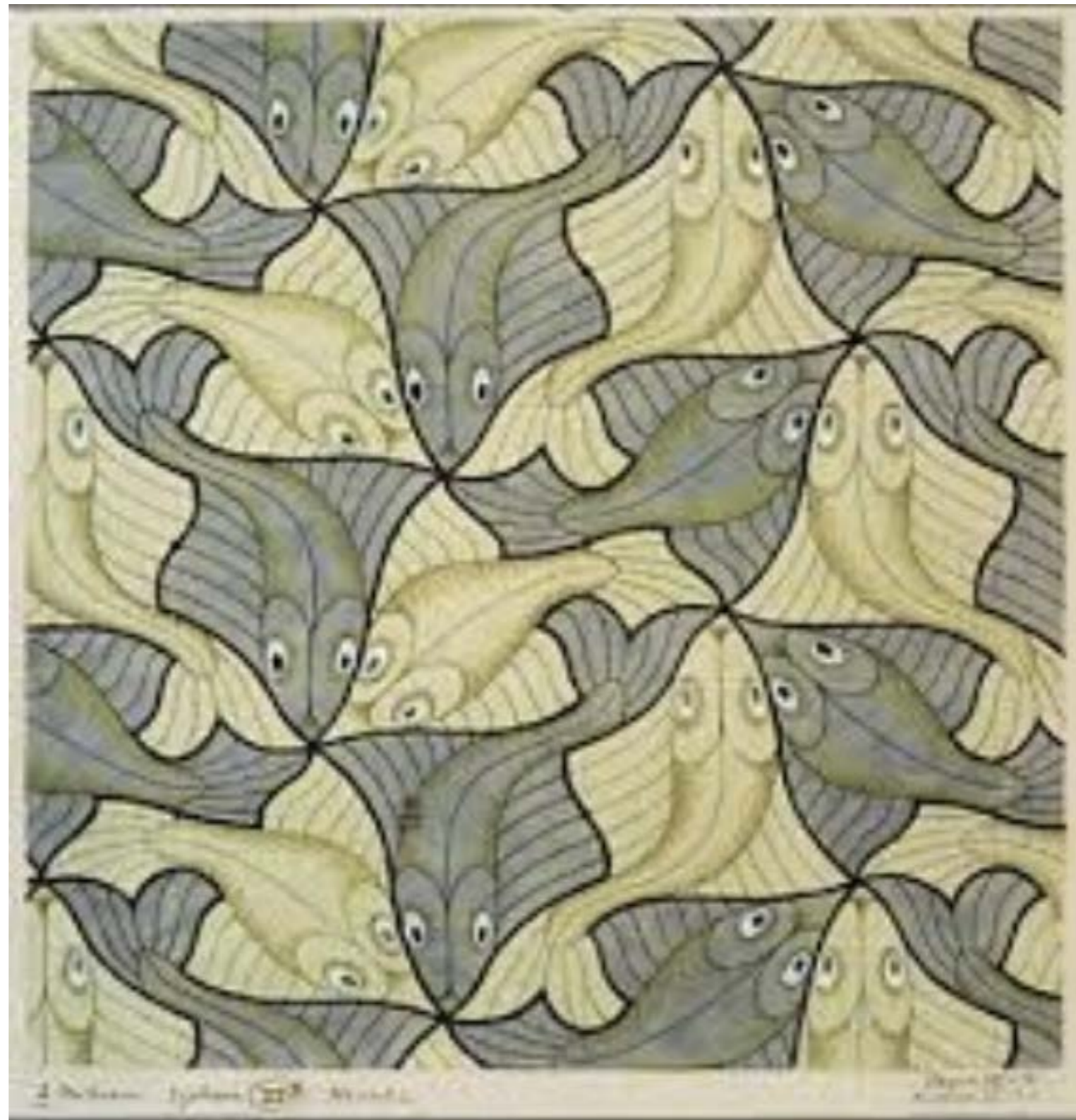
spaces between them make
other recognizable shapes.

Math Vocabulary Quadrilateral Trapezoid

Parallelogram Symmetry

Art Vocabulary Tessellation Contrast





Materials:

Paper
Pencil
Scissors
Tape
Markers
Colored Pencils

bottom

top of that square directly opposite from the bottom where you cut it out
Draw another shape on the **right side** of that square and cut it out
Tape this shape to the **left side** of the paper opposite from the side where you cut it out Look at this new shape and begin to see an image (face, bird, animal, plant, reptile etc.) Place this new tiny shape on your big 10" X 10" paper
Tile this shape over the entire surface of the paper
Add contrasting colors to create an M.C. Escher inspired tessellation



Just for fun

Find the geometric shapes in

